



SquashWise

10 YEARS OF  
IMPACT

The 2017-2018  
Annual Report



SQUASHWISE

10<sup>TH</sup>

ANNIVERSARY

# 10 YEARS OF IMPACT



When a small group of passionate athletes started SquashWise, we were confident that squash would open new doors for aspiring young people in Baltimore.

What we didn't know was how quickly our team of students, parents, staff, volunteers, partners and supporters would grow into a dynamic community united in friendship, fun, and mutual support.

On this milestone anniversary, we are so proud of how far we have come in ten years. Our holistic, long-term program layers academic tutoring and enrichment, squash coaching and competition, social-emotional development, mentoring, and leadership opportunities that position students for lifelong success in college, careers, and beyond.

What lies ahead as we start our second decade? We will graduate more students and support our alumni with regular check-ins and small scholarships to cover the hidden costs of college. Our High Performance Team will continue developing our highest-potential players and strengthen the pathway to college squash opportunities. Most exciting of all, we will continue working toward our ambitious vision to establish a SquashWise Youth Center, which will enable us to more than double our capacity and deepen our impact.

Your support has made our decade of impact possible, and we are honored to count you as part of the SquashWise Family. Together, we will serve up another ten years of expanded opportunities for Baltimore's youth!

*S&R* Sage Platt  
Board Chair

*Abby Markoe* Abby Markoe  
Executive Director



## TOP 10 SQUASHWISE ACHIEVEMENTS

100% high school graduation vs. 70% citywide

84% college bound vs. 43% citywide

92% of students accepted to selective high schools

247 squash tournament entries (2017-2018)

13 college visits (2017-2018)

12 Main Draw winners in squash tournaments (2017-2018)

Four 1st Place winners in national essay competition

45 weeks of programming each year

20+ travel opportunities each year

Henrietta Lacks Memorial Award from Johns Hopkins University (2016)





# THE SQUASHWISE JOURNEY

Over 10 years, SquashWise has supported many students through their journey to college and career. This year, we take a look back on our own decade of development.



With a \$100k challenge grant from SEA and a facility partnership with Meadow Mill Athletic Club, we induct our first rookie class of 14 students.



Enrollment reaches 50 students. The First Annual SquashWise Rally is played at Meadow Mill Athletic Club.



Our staff grows to four full-time positions!



Our annual event is named in memory of founding Board Member, Jack Laporte: The Jack Laporte SquashWise Rally.



Students play in 25 tournaments, plus 17 matches against local school teams.



SquashWise is honored with the Sixth Annual Henrietta Lacks Memorial Award from Johns Hopkins University



A community of 500+ annual donors help SquashWise continue to grow.

2008

2009

2011

2012

2013

2014

2015

2016

2017

2018



Johns Hopkins University becomes our 2nd facility partner, hosting practices at the Ralph S. O'Connor Rec Center.



We purchase our first bus for student transportation.



Loyola University becomes our 3rd facility partner, hosting practices at the Fitness and Aquatic Center.



Students play in 10 tournaments and attend 11 different summer enrichment camps.

Our first graduating cohort heads to college!



SquashWise celebrates our 10th anniversary with 8 full-time staff serving 100+ students and alumni!





# 10TH ANNIVERSARY PARTY



On October 18, 2018, the SquashWise community gathered for a spectacular celebration of our 10th Anniversary at the Mt. Washington Mill Dye House.

Nearly 300 guests enjoyed hearty hors d'oeuvres and toasted this milestone occasion. A team of Student Ambassadors led interactive stations where attendees could try their hand at a rookie tryout game, challenge friends to a trivia match about Baltimore's best and brightest, connect with individual students, and learn about the many ways to get involved with SquashWise.

After opening remarks from Julia Keelty, Event Chair and Board Member, founding Executive Director Abby Markoe offered her reflections on the organization's dynamic journey. The highlight of the evening was undoubtedly the speech made by Tavonte, who joined SquashWise in seventh grade and is currently a freshman at Baltimore Polytechnic Institute.



*Three years ago, I didn't play any sports. I was very inactive and I only stayed at home and slept on the weekends. [Since joining SquashWise], I've played in tournaments in Ohio and Massachusetts, stayed on campus at Williams College and Kenyon College, been to other squash programs in Philadelphia, [and] went to a five week boarding school at Taft School in Connecticut last summer...*

*In our SquashWise classroom, there is a sign that says, "Tell me, what is it you plan to do with your one wild and precious life?" I know for a fact that no matter what happens, SquashWise will always be by my side and help me get through any problem or challenge that I face. Thank you for being here and supporting our team!"*

We are tremendously thankful to each of our 100+ generous sponsors in making this event possible, with special thanks to our Presenting Sponsors: Julia and Michael Keelty, Andie Laporte, Judy and Scott Phares, Betsy and George Sherman, and Platt Development Group; and our Event Partners: the Himmelrich Family and Mt. Washington Mill Dye House, Copper Kitchen, La Cuchara, Superior Oyster Shuckers, True Chesapeake Oyster Co., Harrow, DJ Billy Zee, Loud Communications, Rob White Photography, Nathalie Cone Graphic Design, Sloane Brown's Baltimore Snap, and our media partner, WYPR.



## TOP 10 WAYS TO GET INVOLVED

Become a Mentor, Tutor or Coach

Help Us Establish a SquashWise Youth Center

Host a Career Day or Internship

Connect Students with Your Network

Join a Team in the Jack Laporte SquashWise Rally

Donate Squash Gear

Make a Donation

Promote SquashWise

Donate a Van or SUV for Student Transportation

Challenge a Student to a Match!



# PROGRAM PILLARS & OUTCOMES

Three Program Pillars frame our holistic approach to helping every student develop their potential.

## EDUCATION

Develop motivated, goal-oriented students who are on track to succeed in post-secondary college and/or career opportunities

## SQUASH & FITNESS

Lead a thriving squash program with a good balance of hard work, competitiveness, and fun

## SUPPORT & WELLNESS

Create a second home and a second family for students, using counseling and education to support students in making positive decisions and following goals

## RESEARCH & EVALUATION

In 2018, graduate students from Johns Hopkins University Bloomberg School of Public Health conducted a qualitative evaluation of our program. From in-depth interviews with students, alumni and parents, the researchers found strong positive results:

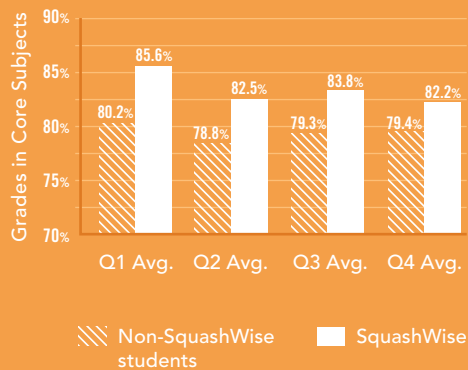
*“SquashWise [is] a channel through which students can explore the wider world. The program facilitated a growth in maturity...helped shape [students’] perspective on life, and taught them to search for positives, even when facing challenges or other disappointments.”*

## EDUCATION

- 92% of this year’s 8th graders qualified for high schools with entry requirements.
- 100% of this year’s high school seniors graduated, with 80% accepted to one or more colleges.
- 86% of SquashWise alumni are actively engaged with regular check-ins, receiving in-person visits from staff, and small scholarships to assist with college costs.

### Middle School GPA Comparison

SquashWise middle school students consistently outperformed their peers, maintaining an average 4 point lead in grades in core subjects.



## SQUASH & FITNESS

- 80% of students completing PACER tests of cardiovascular endurance increased (31%) or maintained (49%) their scores from the previous series.
- Teams participated in 24 sanctioned tournaments hosted by U.S. Squash and the Squash + Education Alliance (SEA).
- Students challenged teams from 8 local schools and 1 peer SEA organization in a total of 19 competitive matches.

### High Performance Team

Thanks to generous funding from The Kahlert Foundation, our High Performance Team (HPT) was in high gear this year!

Open to our top performing players, HPT members commit to hours of additional practice and a demanding tournament schedule.

In 2017-2018, HPT accounted for 106 entries in 22 tournaments, and 7 students of the 10-person team achieved Main Draw winner or Main Draw finalist status in at least one event!

## SUPPORT & WELLNESS

- We launched our Family Committee to more fully engage and respond to parents’ expressed needs, with events promoting nutrition, fitness, and college planning.
- Our Student Leadership Council provided ongoing input on program design and opportunities for student leadership.
- Students participated in 5 service projects, including making care packages for homeless families at the Bea Gaddy Family Center and writing letters to state legislators about gun violence.

### Social/Emotional Counseling

Our professional school counselor conducted 47 counseling sessions with students, parents, and families to address individual challenges and promote social/emotional well-being.



98

SquashWise served 46 middle school students, 37 high school students, and 15 alumni in college and career placements

45

weeks of programming, including Spring Break Camp and 5 weeks of Summer Camp

13

visits to colleges and universities



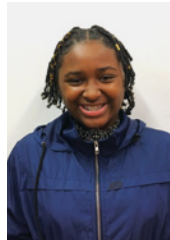


## STUDENT SPOTLIGHTS

From new rookies to accomplished alumni, our students make incredible strides on the courts and in the classroom.

### MIDDLE SCHOOL: JULIEANNA

Winning a “Most Improved: Squash” award halfway through her Rookie year was just the first of many accomplishments for Julieanna (8th Grade, KIPP Ujima Village Academy). An honor roll student with a perpetually positive attitude, she’s already competed in five tournaments, including SEA’s All-Girls and Urban Individuals Nationals, and spent two summers exploring Vermont at Camp Kiniya and with Overland Biking Tours.



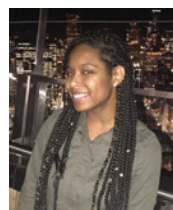
*“The best parts of SquashWise are playing squash, meeting new friends, and knowing that people are here to help you. They provide so many opportunities and trips that help you figure out that you are capable of doing new things.”*

### HIGH SCHOOL: SAVOY



Charismatic, committed and always optimistic, Savoy (12th Grade, Pikesville High School) has emerged as leader at SquashWise. Since joining the team as an 8th grade rookie, he’s become passionate about squash and the community it brings together. He’s served on the Student Leadership Council, stacked up 14 tournament entries, trained on the High Performance Team, and celebrated as a Main Draw winner with his squad at the 2018 Urban Teams Nationals. This summer, he attended the Summer Science Academy at McDaniel College and journeyed to Israel as a fellow in the Elijah Cummings Youth Program. Now in his senior year, Savoy is ready and eager to “choose a college where I can succeed and do my best,” with the ultimate goal of attending medical school.

### ALUMNI: TAYLER



Since joining in 2008, Tayler has continued to set the bar high! She earned scholarships to intensive academic summer programs, braved Outward Bound wilderness courses, and capped off her high school career with a hard-fought Main Draw win in the B-Draw at Urban Individuals Nationals in 2015. She attends UMBC and looks forward to achieving her BA in Biology in 2019. “SquashWise is one of the best decisions I have made in life... the opportunity to learn and grow within a caring, kind, and supportive community. Throughout my worst days and my good, the SquashWise staff has always provided me with the guidance and the ‘helping hand’ I need to push on and be the best version of me.” Tayler’s future plans include serving in the Armed Forces and pursuing a career in veterinary medicine.

## ENRICHMENT & GROWTH

SquashWise is much more than a sports program. We provide expanded opportunities to enable students to reach life goals.

### COLLEGE & CAREER



Long before the typical junior year sprint of college visits, SquashWise students start exploring post-secondary options as early as middle school. This year, rookies got the chance to see academic and athletic excellence in action when they trained with the varsity squash team at the U.S. Naval Academy! From taking day trips to institutions like George Washington University and Dickinson College, to playing in tournaments held at Franklin & Marshall, Williams, Amherst, and Kenyon Colleges, students come to feel at home in a college setting. Students also learned about varied career paths during career days at T. Rowe Price and 14 West, as well as networking events with squash players.

### CITIZENSHIP & ADVOCACY



After sending letters to State representatives about gun violence, students were invited by Delegate Nick Mosby (District 40, Baltimore City) to visit Annapolis and observe Maryland’s legislature in action. During ‘Citizenship Week’ of Summer Camp, students met with local activists and entrepreneurs about government advocacy, the role of the media, and other strategies for increasing civic engagement. Guest speakers included Lady Brion Gill (Leaders of a Beautiful Struggle), Geoff Blake (MissionFit), Aaron Henkin (WYPR), and Frank Patinella (ACLU of Maryland).

*“At your young age, if your dreams do not scare you - if you’re not afraid of those dreams - then you’re not dreaming big enough.” Del. Mosby to SquashWise students*

### ATHLETIC ACHIEVEMENT



This year, SquashWise had 12 Main Draw winners in squash tournaments near and far! James (11th Grade, Mount Saint Joseph High School) was invited to join the SEA National High Performance Team, which distinguishes the top players from 19 member programs across the U.S. based on national rankings, work ethic, and athletic potential. As a member of this elite squad, he received top-flight coaching and participated in intensive training camps in Chicago and Boston.

## EXPANDED OPPORTUNITIES



Because of these experiences, I have multiple friends all over the world... from Hong Kong, Germany, Russia, Italy, and Costa Rica.”  
Tavonte, 9th Grade

## FINANCIAL REPORT



26 SquashWise students leveraged over \$70,000 in scholarship funds to participate in 19 enrichment programs, including:

### ACADEMIC

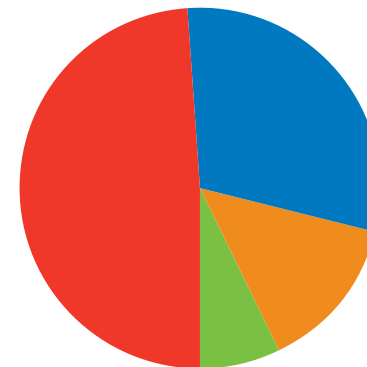
- Regional Math/Science Center at Frostburg State University (2 students, Maryland)
- Summer Science Academy at McDaniel College (1 student, Maryland)
- Yleana Leadership Academy at Colgate University (1 student, New York)
- Hotchkiss Summer Portals at The Hotchkiss School (2 students, Connecticut)
- Young Scholars Program at The Taft School (1 student, Connecticut)

### ENRICHMENT

- Camp Dudley & Camp Kiniya (6 students, Vermont/New York)
- Overland Camps for Biking, Writing, Hiking and Service (5 students, New England)
- SEA Urban Squash Citizenship Tour (1 student, East Coast)

### SQUASH

- Sobhy Squash Camps (4 students, Maryland)
- Embrace Camp at SquashSmarts (4 students, Pennsylvania)
- Millman Experience (4 students, Tennessee)
- Mission Squash Service and Squash Camp (2 students, Texas)
- Penn Squash Camp at University of Pennsylvania (1 student, Pennsylvania)
- SEA Summer Training Squad at Deerfield (2 students, Massachusetts)
- SEA National High Performance Team Training Camps (1 student, Nationwide)



### Revenues

\$785,915 raised:

- **49%**  
\$390,375 from Foundations
- **30%**  
\$234,122 from Individuals
- **14%**  
\$108,750 from Board Members
- **7%**  
\$52,668 from Corporations

**\$355,000:** raised during the 7th annual Jack Laporte SquashWise Rally

**\$17,650:** of in-kind donations including gym memberships to Meadow Mill Athletic Club, squash tournament fees, squash gear, gift cards, school supplies, accounting services, office rent, and HVAC maintenance services. See donor list for in-kind donors.

**\$600,159:** FY18 Expenses

—\$528,439 program expenses (88%)  
—\$71,720 administrative expenses (12%)

SquashWise's FY18 audit and Form 990 will be available in early 2019 by contacting [accounts@baltimoresquashwise.org](mailto:accounts@baltimoresquashwise.org) or 443.682.7126

## OUR SUPPORTERS

### The Jack Laporte SquashWise Rally

We celebrated the 7th anniversary of our annual tournament-fundraiser, named in memory of founding board member, Jack Laporte. Proudly presented by T. Rowe Price, the 2018 Rally raised \$355,000, representing more than half of our budget! Donors to the Jack Laporte SquashWise Rally memorial event are noted throughout the “2017–2018 Supporters” list with the designation “**JL.**”

#### Presenting Sponsor

T. Rowe Price

#### Supporting Sponsors

Bitscope Consulting  
Graystone Consulting  
Hoffberger Moving Services

#### Corporate Patrons

BB&T  
Baltimore Gas and Electric  
Maryland Capital Management  
M&T Bank

#### Teams and Amounts Raised

##### T. Rowe Price, Fundraising Champions, \$86,055

Hugh McGuirk, Omar Blanca, Vinit Agrawal, Bob Ihle, JB Miller, Patrick Miller, Charlie Hill, JD Wells, Chris Casserly, Jon Casper, Jeff Nathan, Chris Driessen

##### The Crusies, \$54,711

Sage Platt, Andie Laporte, Hayward Howard, Lanny Springs, Doug York & Ryan York

##### Brown Advisory, \$54,650

Chris Berrier, Taylor Tutrone, Eliza Schuster, David Chudy, Doug Borg

##### Hofflak, Squash Champions, A Division, \$41,700

Bill Krulak, Doug Hoffberger, Teddie Arnold, Chris Feiss, Chris Haley, Jared Spahn, Keith Hinder, John Porter

##### Team Meadow Mill, Squash Champions, B Division, \$23,758

Brian Mackey, Craig Medvecky, Charlie Metz, Jeff Rogers, Ed Brown, Albert Grosman, Paul Koprowski, Nancy Cushman

##### Ringe Ravens, \$19,435

Jacob Himmelrich, Sam Himmelrich, Carey Fetting-Smith, Mark Fetting, Steve McGuire, Ari Abramson

##### SquashWise Army, \$19,600

Bill White, Duke Murphy, Paul Harriss, Donal Doyle, Jack Woloszyn, Sam Willman, George Riggs

##### Women's Revolution, \$16,940

Ubu Grace Hoshizaki, Maureen Wylie, Leslie Connolly, Shelley Fowler, Suzanne Sangree, Lizz Everts, Pat Wong, Beth Garner, Ben Garner, Christi Tezak

##### The Club Road Crew, \$16,050

Jim Meek, Leslie Meek, Landon Royals, Brendan Collins, Ron Tutrone, Lissen Tutrone, Emmett McGee, Bob Travers, Greg Kahler

##### Team STX, \$14,425

David Emala, John Triscoli, Dan Dent, Neil Brownawell, Dan Korn

##### Stifel, \$6,485

Rich Repetto, Jon Neave, John Harmon, Matt Franke, Hugh Warns

#### Squash Court Sponsors

BBR Partners  
Brown Advisory  
Canton Self Storage  
Corbyn Investment Management  
DICK'S Sporting Goods  
JC Porter Construction  
Insurance Services Group  
Maury, Donnelly & Parr  
Meadow Mill Athletic Club Foundation  
Merritt Properties  
Miles & Stockbridge, P.C.  
People's Bank  
RBC Wealth Management: The Brinton Dingle Group  
Royals Commercial Development  
Stifel  
Vanguard Retail Development  
Webcon  
Whiteford, Taylor, & Preston

#### In-Kind and Facility Support

Meadow Mill Athletic Club  
Andy Nelson's BBQ  
Blue Pit BBQ  
Harrow  
La Cuchara  
The Platt Family

### Junior Rally

The Junior Rally raised more than \$8,000 for SquashWise! The event brings junior squash players together to advocate for SquashWise and compete in a fun squash tournament. Thanks to our 2017 sponsors: Harrow, OrthoMaryland, Physical Therapy at Bare Hills, BGE, Quercus, and McDonogh School. In response to Hurricane Harvey last fall, SquashWise students decided to donate 100% of its team's proceeds and 10% of overall event proceeds to Mission Squash, our peer program in Houston.

### Memorial & Honorary Gifts

SquashWise is touched when friends and family choose to make a donation in memory of or in honor of a loved one.

#### In Memory of Jack Laporte

Donors to the Jack Laporte SquashWise Rally memorial event are noted throughout the “2017–2018 Supporters” list with the designation “**JL.**”

#### In Memory of Jervis Finney

Donations made in memory of Jervis Finney, including to the ‘Juniors for Jerve’ Junior Rally team, are noted throughout the “2017–2018 Supporters” list with the designation “**JF.**”

#### In Memory of Sam & Jane Gensler

Matthew Skarzynski

#### In Honor of Zach Bradley

Nina Bradley

#### In Honor of Edward Brown

Henry Brown

#### In Honor of Cromwell Valley Elementary Magnet School 2017-2018 Fifth Grade Class

Florence Falatko

#### In Honor of Eva & Whitney Finney

Kathy Finney

#### In Honor of Beth Garner

Julie & Griff Aldrich

#### In Honor of Bruce Jordan

Thomas Gowen  
Suzanne Sangree

#### In Honor of Abby Markoe

Pearl Marcus  
Judy & Scott Phares

#### In Honor of Luca Perell

Sara Nerken

#### In Honor of Anne Phelan & Tom Dolina

Sally & Calvert McCabe

#### In Honor of Cotten Seiler

Ellen Claire Newcomer

#### The Mary Jean & Oliver Travers

##### Foundation honored:

Nancy Cushman  
Doug Hoffberger  
Abby Markoe  
Jim Meek

#### In Honor of Omar Sobhy

Friends of Omar Sobhy donated in his honor during his competition in GoRuck Selection. These donors are noted throughout the “2017–2018 Supporters” list with the designation “**OS.**”

### 2017–2018 Supporters

This list includes all donors during our fiscal year, July 1, 2017–June 30, 2018. Our generous FY19 donors will be recognized in the next annual report.

#### \$20,000 and above

Abell Foundation  
The Eliasberg Family Foundation, Inc. **JL**  
Harry Gruner & Rebecca Henry **JL**  
Hoffberger Family Philanthropies **JL**  
Kahler Foundation **JL**  
Marion I. & Henry J. Knott Foundation **JL**  
Andie Laporte **JL**  
Hugh & Amy McGuirk **JL OS**  
MSDE Next Generation Scholars Program (via KIPP-Baltimore)  
Sage Platt, Platt Development Group **JL**  
Platt Foundation  
Henry & Ruth B. Rosenberg Foundation  
Harry & Jeanette Weinberg Foundation

#### \$10,000–19,999

Julia & Michael Keelty  
Judy & Scott Phares **JL**  
T. Rowe Price Associates **JL**  
Transamerica Foundation  
Under Armour  
Douglas & Elizabeth York **JL**

#### \$5,000–9,999

Dan & Mary Dent **JL**  
Drs. Bill & Elke Durden,  
Furthman Durden Trust  
Sam & Pam Himmelrich **JL**  
A.C. and Penney Hubbard Foundation, Inc. **JL**  
Johns Hopkins Neighborhood Fund  
Jim & Leslie Meek **JL**  
Charles Platt & Jennifer Greene, Bitscope **JL**  
Ravens Foundation  
The Dr. Louis and Anne B. Schneider Charitable Trust  
Thomas Wilson Foundation  
Mary Jean & Oliver Travers Foundation **JL**

#### \$2,500–4,999

BB&T **JL**  
John Blair, Maryland Capital Management **JL**  
Andy & Sana Brooks **JL**  
Eddie C. & C. Sylvia Brown  
Family Foundation  
CareFirst BlueCross BlueShield  
Tom Dolina & Anne Phelan **JL**  
Exelon **JL**  
Mark Fetting & Georgia Smith **JL**  
Douglas & Catherine Hoffberger **JL**  
PayPal, Inc.  
M&T Charitable Foundation **JL**  
Lois and Philip Macht Family  
Philanthropic Fund of THE ASSOCIATED  
Charlie Metz **JL**  
Dr. Bob & Joan Ottenritter  
Vernon Reid **JL**  
T. Rowe Price Foundation  
Vincent Talbert **JL**  
Hugh & Monica Warns **JL**  
Jack & Erin Woloszyn **JL**

#### \$1,000–2,499

Anonymous **JL**  
Peter & Heather Austin **JL**  
Baltimore Gas & Electric **JL**  
Rick Berndt  
Chris Berrier **JL**  
Randy Brinton & Frank Dingle,  
RBC Wealth Management:  
The Brinton Dingle Group **JL**  
Robert & Kimberly Cashman **JL**  
Paul & Elizabeth Centenari **JL**  
Chorske Family Foundation **JL**  
Dr. Brendan & Nathalie Collins **JL**  
Leslie Connolly **JL**  
The Cromwell Family **JL**  
Nancy Cushman, Meadow Mill Athletic Club Foundation **JL OS**  
David Dardis  
Dell Foundation **JL**  
DICK'S Sporting Goods **JL**  
Nigel Faulkner **JL**  
Charles Fenwick **JL**  
Carey Fetting-Smith & Steve McGuire **JL**  
Bruce Fleming, CANUSA Corporation **JL**  
Newt & Shelley Fowler **JL**  
Denise Galambos & Bill Kichline **JL**  
Bradley Glaser & Melissa King,  
Vanguard Retail Development **JL**  
The Grosman Family **JL**  
Martin Gross, Sandalwood Associates **JL**  
Christopher Haley,  
Palladian Realty Capital **JL OS**  
Charles & Eugenia B. Hill **JL**  
Jacob & Sarah Himmelrich **JL**  
Michael & Margaret Hoffberger,  
Hoffberger Moving Services LLC **JL**  
Hayward Howard, Maury, Donnelly,  
and Parr Inc. **JL**  
Steve & Laurie Kelly **JL**  
Bob Kent, Kent Family Foundation  
Paul Koprowski & Maia Tatinclaux,  
Tatinclowski Philanthropy **JL**  
Bill & Debi Krulak **JL**  
Earl & Danielle Linehan,  
The Linehan Family Foundation, Inc. **JL**  
Emmett McGee **JL**  
Paul & Jennifer McKinnell  
Robb & Sheila Merritt, Merritt Properties **JL**  
Miles & Stockbridge Foundation **JL**  
Morgan Stanley Charitable Spending **JL**  
Jon & Lauren Murphy **JL**  
Jonathan Neave **JL**  
Jessica Norwitz & Ross Levin **JL**  
Steve & Sue Norwitz **JL**  
Wells Obrecht, Canton Self Storage  
& Obrecht Real Estate **JL**  
Wayne & Grace Park **JL**  
People's Bank **JL**  
John & Alysa Porter, JC Porter  
Construction, LLC **JL**  
Catherine & William Rahm **JL**  
George & Suzie Riedel **JL**  
James S. & Gail P. Riepe **JL**  
Charlotte & George Riggs Charitable Fund **JL**  
James D. Robinson **OS**  
Seyfarth Shaw Charitable Foundation **JL**  
Ronald & Kathryn M. Shapiro **JL**  
Porter & Bob Siems, CMR Realty **JL**  
Robert F. & Claire O'Neill Smith  
Lanny Springs **JL**  
Joe Sutton, Insurance Services Group

**JL** Donated in memory of Jack Laporte to the Jack Laporte SquashWise Rally

**JF** Donated in memory of Jervis Finney

**OS** Donated in honor of Omar Sobhy



T. Rowe Price Matching Gift Program **JL**  
Pat & Robin Tracy  
George & Beth Van Dyke,  
Van Dyke Family Foundation, Inc. **JL**  
Rob Webb,  
Webcon Construction Company **JL**  
Bill & Blair White **JL**  
Whiteford, Taylor & Preston **JL**  
Ted & Mary Jo Wiese **JL**  
David & Mary Williams  
Sam Willman **JL**  
Pat & John Wong **JL**  
Maureen Wylie **JL**

#### \$500-999

Anonymous **JL**  
David Baranano **JL**  
Justin & Kristen Brown **JL**  
Neil Brownawell & Jean Scheffenacker **JL**  
Charles & Julia Bryan **JL**  
Angus Burton,  
Marathon Capital Management, LLC **JL**  
Mark & Linda Caplan,  
Caplan Family Foundation  
Andrew & Roberta Cordova **JL OS**  
Damien Davis **JL**  
Donal Doyle **JL**  
Jennifer Galambos  
William Gaynor  
Cass & Erin Gilmore  
Dennis & Dorothy Graul **JL**  
Josh Hall & Kim Burch **JL**  
James Halle, Halle Family Foundation  
Paul Harriss **JL**  
Barbara Hart **JL**  
Peter Heffernan & Maureen Walsh **JL**  
Surya K. Hejeebu  
Richard J. Himelfarb **JL**  
Jennifer King Gorski **JL**  
La Cuchara  
McDonogh School  
Steven Mottley **JL**  
Marguerite Mugge & Michael Gill  
Dr. Joseph Murphy  
Ellen Claire Newcomer  
The Centers for Advanced Orthopaedics,  
OrthoMaryland Division  
Ryan Preston, Evan Roth & BBR Partners **JL**  
Richard J. Repetto **JL**  
Susannah Rienhoff **JL**  
Jeff Rogers **JL**  
Craig Roswell & Matt Kimball,  
Niles, Barton & Wilmer, LLP **JL**  
Landon & Joan Royals,  
Royals Commercial Services **JL**

J. David & Patricia Schuster,  
Schuster Family Fund **JL**  
Thomas Schweizer **JL**  
STX **JL**  
JD & Mary Wells **JL**  
Dr. Laurie Wenger, Potomac Eye Surgeons **JL**  
Gordon Witherspoon **JL**  
Brad & Crickett Woloson  
Annette Zehler **JL**

#### \$250-\$499

Delbert & Gina Adams  
Anonymous **JL**  
Dr. Riaz Arshad  
James E. Bacon **JF**  
Dr. Michael Ballo & Joanna Pi-Sunyer **JL**  
Dave Bender, Physical Therapy at Bare Hills  
Blue Pit LLC  
ACNB Bank **JL**  
Rachel & Cory Capps **JL**  
Geoff & Susan Carey **JL**  
Ward Classen **JL**  
Peter Cohen & Ann Watson **JL**  
Thomas Costello **JL**  
Sarah Davidson  
Jeff & Patricia Dayton **JL**  
Alicia Delguercio  
Drs. William & Victoria Dowling **JL**  
David & Jeannie Emala **JL**  
Kelly & Vanessa Finney,  
Quercus Management **JL JF**  
Champe & Anne Fisher **JF**  
Sarah & Howard Francis **JL**  
Matthew Frazier  
Roger Friskey **JL**  
Merrill & Sean Grant **JL**  
Andy & Susie Greene  
John Greene  
Nathan Hall **JL**  
Harry Halpert  
Martin & Paula Himeles **JL**  
Alfred & Dana Himmelrich **JL**  
Carrie Himmelrich **JL**  
Gregory Hobson, Greenspring Advisors  
Ubu Grace Hoshizaki **JL**  
Robert Ihle **JL**  
Alex Jacobs, Coppermine Racquet  
& Fitness **JL**  
Courtenay Jenkins **JL**  
Jason & Stephanie Jones **JL**  
Susan & Richard Jones **JL**  
Alan Kikuchi **JL**  
Lindsay & Andrew Kinkead  
Theresa Kollman & Steven Potter  
Jim & Maya Lancaster **JL**

Timothy M. Laporte **JL**  
John & Catherine Lawson **JL**  
Lynn Lederer & Les Long  
Keith Lewis  
LitCon Group, LLC **JL**  
Pearl Marcus  
Abby Markoe & Mark Gidlund **JL**  
Harry & Tara McDonough  
Craig & Brenda Merrill **JL**  
JB Miller **JL**  
Patrick & Julia Miller **JL JF**  
Gary Mitchell **JL OS**  
Leanne & Hugh Mohler  
Russell Munson & Deborah Quinn-Munson **JL**  
Network for Good  
Charles F. & Margaret M.H. Obrecht  
Family Foundation, Inc.  
Charles & Hilary Parkhurst  
Tom & Laurel Peltier **JL**  
Michael & Margie Riehl **JL**  
Bruce Rogers, Sherwood Auto  
Brian Ross **JL**  
Ankur Salunkhe **JL**  
Walter Schamu, Schamu, Machowski,  
& Patterson Architects  
Lisa Scotti  
Graham & Gillian Shafer  
Matthew Skarzynski  
Josh & Erika Slater **JL**  
Randall Sones **JL**  
Jonah Sonnenborn **JL**  
Squash + Education Alliance  
Victoria Sutton **OS**  
Christine Tezak **JL**  
Walter Thiemann  
John Triscoli **JL**  
Dr. Ronald & Lissen Tutrone **JL**  
Bernard & Ann Van Ogtrop  
Cindy Vojtech **JL**  
Voneiff Family Partnership **JF**  
Thomas Washburne  
Peter Winch & Elli Leontsini

#### \$1-249

Julian Ackert **JL**  
Ann Adams  
Vinit Agrawal **JL**  
Kevin Aiston & Pauline Shoback  
Allison Akehurst & Eric Anderson **JF**  
Julie & Griff Aldrich **JL**  
Amazon Smile Foundation  
Kathleen Anderson **JL**  
Will & Louise Andrews **JL**  
Anonymous **JL JF**  
Teddie & Maia Arnold **JL**

Desmond & Jennifer Arrup **JL**  
John Avirett **JL**  
Mary Baetjer **JF**  
Walter Baetjer **JL**  
Kristin Barbato **OS**  
Timothy Barnhill  
Dean Bauer **OS**  
Janet Beach **JL**  
Stuart Berger **JL**  
Evan Berney **JL**  
Krissy & Logan Bernstein **JL**  
David Bian **OS**  
Omar Blanca **JL**  
Henry McCoy Blue **JL**  
Weston Boone **JL**  
Shana Boscak **JL**  
Peter & Chi Chi Bosworth  
Denis & Constance Bourke **JL**  
Peter Bowe **JL**  
Thomas & Judith Boyd **JL**  
John & Kimberly Bradbury  
Nina Bradley **JF**  
Ralph Bradley & Kathleen Hermann **JL**  
Vanessa Brooks **JL**  
Charles Brown **JL**  
Henry & Patricia Brown **JL**  
Andy Brown **JL**  
Edward & Victoria Brown **JL**  
Dr. William Bruchey  
Mona & Ian Butterfield **JL**  
Samuel Camiener  
Mac & Meredith Caplan **JL**  
Thomas Carlson  
Clark & Liz Carter  
Paulette Castel **JL**  
Michael Ciesielski  
John H. Claster **JL**  
Mary Clare Coghlan  
David Collins **JL**  
Steve Conly **JL**  
Gus Cook **OS**  
Dr. AJ Copeland **JL**  
Kathleen M. Cranford  
Sierra Crist  
Mike Crogan **JL**  
Sam Crystal **JL**  
Matt Dabrowski **JL**  
Parker & Laura Davis **JL**  
Dirk Degenaars **JL**  
John Devor **JL**  
Piper Douglas & Jennifer Armstrong **JL**  
Charles & Cynthia Eby  
Marshall & Melissa Elkins  
Henry Entwisle **JF**  
Hugh & Sarah Evans **JL**

Robert & Roseanna Everd **JL**  
Lizz Everts **JL**  
Ali Fadl **JL**  
Florence Falatko  
A.J. Fechter **OS**  
Karl-Georg Federhofer **JL**  
Allan Fenselau **JF**  
Robert Finkel **JL**  
Harrison Finkelstein  
Lesley Finney **JF**  
Kathy Finney **JF**  
Patricia Finney **JF**  
Jean & Redmond Finney **JF**  
Helen P. Finney & E. Kelly Finney **JF**  
Spencer Finney **JF**  
Paul Fisher & Laura Glaeser **JL**  
Mindie Flamholz  
David P. Foulke **JL**  
Matthew & Mollie Franke  
Haswell & Madge Franklin  
Erich & Alaina Frey **JL**  
Bennett Gaeger **JL**  
Emma Galambos  
Louis Galambos  
David Gallagher **JL**  
Dr. Earl & Martha Galleher **JL**  
Beth & Ben Garner **JL**  
Arthur George **JL**  
Erik Ginsberg **JL**  
Kathryn & Eric Goedeke **JL**  
James Goodyear & Indira Kotval **JL**  
David L. Goott  
Thomas Gowen  
Sally & Morgan Granger  
Walter Gray **JL**  
Brian Green **JL**  
Lisa Hall **JL**  
Alexander Halpern **JL**  
Lois Halpert **JL**  
Pelham Hardie  
Terri Harrington  
Joshua Hartig **JL**  
Sally Hess  
Michael Hickey **OS**  
Fred & Marguerite Hill **JL**  
Sam & Barbara Himmelrich **JL**  
Anna Himmelrich & Matt Kozlov **JL**  
Bruce Hoffberger  
Elizabeth Holdefer **JL**  
Andrew & Karin Holland **JL**  
John Howard **OS**  
Matthew Hummer **OS**  
Michael Hutton  
Tom Inglesby **JL**  
Robert & Helen Jakobe

Henry & Annie Jenkins **JF**  
Greg Jenkins **JL**  
Naomi Jones  
Chris Jones **JL**  
Sukon Kanchanaraksa  
Jon Kaplan  
Kenneth & Anne Katz **JL**  
Sam & Jen Kennedy **JL**  
Sean Kernan **JL**  
Frank & Gretchen Kimmel  
Tom & Mary Kinslow **JL**  
Jean Kirsch  
Joan Kirschner **JL**  
Matthew & Gretchen Klaiber **JL**  
Carter & Colleen Knipp **JL**  
Robbie Knipp **JF**  
Martin Knott  
Kenneth Kolodner & Alison Brown  
Brad Kolodner **JL**  
Baker Koppelman  
Dan Korn **JL**  
George & Heather Krause **JF**  
Danny Krieger & Caroline Covington **JL**  
William & Sharon Krulak **JL**  
Sanjay Kulgod  
Robert Kunisch  
Susan Garvey Laing  
Shelby Lamar **JF**  
Gary, Robin, & Kyle Langenfelder **JF**  
Julie & Randy Langis **JL**  
Andres Lares **JL**  
Susan Lawrence & Marcia Hart **JL**  
Stephanie Le **JL**  
Gerald Lean & Selma Rozga-Lean  
Stephen Leary **OS**  
Edward Levendosky **JF**  
Dr. Richard & Robbie Levin **JL**  
Michael Levin & Emily Hoppe **JL**  
Leonard & Leslie Lewandowski  
Neil & Nancy Lewis  
Mark Licht **JF**  
Patrick Linnemann **JL**  
Dr. & Mrs. Robert Loeb  
Debbie & Matt Long  
Linda & Blair Lounsbury  
Alex G. Love  
Brian & Cristina Mackey **JL**  
Thomas H. Maddux  
Jon Mahan **JL**  
Barbara Manning & Joe Feldman **JL**  
Emily Markoe  
Martin Markoe & Leah Augenbraun  
Andrew & Ruth Markoe  
Dr. Jan Markowitz **JL**  
Alexander Martin **JL**

**JL** Donated in memory of Jack Laporte to the Jack Laporte SquashWise Rally

**JF** Donated in memory of Jervis Finney

**OS** Donated in honor of Omar Sobhy

**JL** Donated in memory of Jack Laporte to the Jack Laporte SquashWise Rally

**JF** Donated in memory of Jervis Finney

**OS** Donated in honor of Omar Sobhy

Kathryn Mastandrea & Alex Wozniak **JL**  
Tommy Mathews **JL**  
Louis & Anne Mathews **JL**  
John McBean & Christine Yee **JL**  
Sally & Calvert McCabe  
Michael McCarthy **JL**  
Jane C. McConnell  
John & Suzanne McNamara **JL**  
Craig Medvecky & Jill Owczarzak **JL OS**  
Greg Meyers  
Chrissy & Eric Miller  
Marc & Lori Miller **OS**  
Christie & Brendan Moag **JL**  
George & Cynthia Mullinix **JL**  
Scott Munson & Sarah Kilby **JL**  
Dara & Andy Murray  
John Nelson **JL**  
Sara Nerken  
Peter Orthwein  
Kevin Osten **JL**  
Laurence & Danielle Oster  
Slater Ottenritter  
Mary Palmer **OS**  
Allison Parker-Abromitis **JF**  
Bill Paternotte,  
Paternotte Family Foundation **JL**  
Christian Pavlovich & Tedine Ranich **JL**  
William & Anne Peck **JL**  
Sam Peters **JL**  
Ellen & Gary Petler **JL**  
Margot Petler & Dave Harrington **JL**  
Gregory Pinkard **JL**  
Nicholas Piraino  
William Pointer **OS**  
Chris Post **JL**  
Walter & Shawn B. Radek  
Daesha Ramachandran **JL**  
Michael & Gail Reid **JL OS**  
Todd & Lauren Reinecker **JL**  
Mark Renbaum  
Hutch Robbins **JL**  
Edward & Marion Robbins  
Katie Robinson & Josh Kermond **JL**  
Jason Rockwell **OS**  
Roland Park Country School  
Jon Roll **JL**  
Barry Rollins **JL OS**  
Barbara & Robert Rosen **JL**  
Emily Rosenfeld **OS**  
Eric & Pamela Rosenthal **JL**  
Collins Roth **OS**  
Michael Royce  
Frederick Runge **JL**  
Andrea & Sean Russell **JL**  
James Russo **OS**

Suzanne Sangree  
Peggy Schapiro  
Kelly Schatz **JL**  
Bradley Schlafer **OS**  
Sarah Schlenker  
Andrew Schwartz **JL**  
Joi Scott **JL**  
Sherrie & Jeffrey Scott **JL**  
Andrew Scott **JL**  
Jeffrey Seibert **JL**  
David Seiler **JL**  
John Shaduk **JL**  
Dr. Kathirkamanathan Shanmuganathan **JL**  
Randy Shayotovich & Priya Rayadurg **JL**  
Brain & Carol Sheahan **JF**  
Phil Shin **JL**  
Leonardo Silvestri  
Anne & John Simanski **JL**  
Thomas D. Slaughter  
Eleanor Smith  
Sabrina Sobhy **OS**  
Amanda Sobhy **OS**  
Michael Sonnenfeld & Betty Symington **JL**  
Ronald & Gail Spahn  
Ned Sparrow **JF**  
John Spensieri **JL**  
David & Diane Standeven **JL**  
Taylor Steel **JL**  
Benjamin Stein **JL**  
Adele & David Stotler **JL**  
Barbara Styr  
David Sukenik **JL**  
Bennett Sweren **JL**  
Michael Szymanowski **JL**  
Dave & Laurie Thomas **OS**  
Cathy & Sandy Tierney **JL**  
Mary Linda Tolson  
Paul & Alison Trinkoff  
Kevin Tscherne **JL**  
Taylor Tutrone **JL**  
Jeff Ulehla **JL**  
Vicki Vaughn **JL**  
Tim Vecchione **JL**  
John Voneiff **JF**  
Lloyd E. Voneiff **JF**  
Jason Weinstock **JL**  
Robert Weinstock **JL**  
J. David & Lisa A. Wetzel **JF**  
Joan Weyers  
David J. Weymer **JL**  
Annie Wickstrom **JL**  
Justin & Tammy Wiggs **JL**  
J. Blacklock Wills  
Scott Wilson **JL**  
Cynthia Wise **JL**

Ray & Stacey Wittelsberger **JL**  
Nancy C. Wolf **JL**  
John Woloszyn **JL**  
Marion Worth **OS**  
Sanford Wu **JL**  
John & Amelia Wyant **JL**  
Ren C. Zheng & Mei Ying Wang **JL**  
Aaron & Alycia Zimmerman **JL**

#### In-Kind Donations

Andrew Cordova  
Andy Nelson's BBQ  
Baltimore Chesapeake Bay  
Outward Bound School  
Blue Pit BBQ  
BOMA Baltimore  
Camp Dudley and Camp Kinyi  
David Dembert  
Harrow  
Hotchkiss School  
Knott Mechanical  
Omar & Amanda Sobhy  
Overland Summer Camps  
La Cuchara  
Meadow Mill Athletic Club  
Meadow Mill Office Complex  
The Millman Experience  
Mission Fit  
Mission Squash  
Penn Squash Camp at University  
of Pennsylvania  
Regional Math/Science Center at  
Frostburg State University  
Rodgers Farm  
Rotary Club of Baltimore  
Squashgear.com  
SquashSmarts Embrace Camp  
Squash + Education Alliance  
St. Paul's Squash  
Taft School  
U.S. Squash  
Vardavas & Concannon  
Yleana Leadership Academy

## OUR PARTNERS

### Board of Directors

Sage Platt, President & Chairman  
Douglas M. Hoffberger, Vice President  
Hugh McGuirk, Treasurer  
Nancy Cushman, Secretary

Bill Durden, PhD  
Carey Fetting-Smith  
Denise Galambos  
Peter Heffernan  
Jacob Himmelrich  
Julia Keelty  
Owen Knott  
William M. Krulak, Jr.  
Jim Meek  
Jessica Norwitz  
Wayne Park  
Blair White  
Doug York  
John H. Laporte\*  
\*Emeritus, deceased

### Staff

Abby Markoe  
Executive Director & Co-Founder

Matt Skarzynski  
Program Director

Zach Bradley  
Squash Director

Emily Rosen  
Director of Counseling &  
Post-Secondary Success

Alexis Bond  
Middle School Academic Coordinator

Emilie Card  
High School Academic Coordinator

Stephanie Chou  
Middle School Squash Coordinator

Olivia Maruca  
Alumni Support & Program Assistant

Katie Rouse  
Strategic Priorities Manager

### Facility Partners

Meadow Mill Athletic Club  
Johns Hopkins Ralph S. O'Connor  
Rec Center  
Loyola Fitness & Aquatic Center

### Baltimore City Public School Partner

KIPP Ujima Village Academy

### Volunteer Partners

Alpha Phi Omega,  
Johns Hopkins University  
Center for Social Concern,  
Johns Hopkins University  
SOURCE, Johns Hopkins University  
Johns Hopkins Schools of Public Health,  
Nursing, and Medicine  
Johns Hopkins Bloomberg School of  
Public Health  
*Dr. Peter Winch and Qualitative  
Research Students*

Johns Hopkins School of Education  
*Dr. Ileana Gonzalez and Counseling  
Practicum Students*

Johns Hopkins School of Nursing

University of Maryland  
School of Medicine

SquashWise is a proud member of the Squash + Education Alliance, which strengthens and supports new and existing squash and education programs across the USA and abroad.



### Baltimore SquashWise

3600 Clipper Mill Rd., Suite 103  
Baltimore, MD 21211

### Abby Markoe

Executive Director  
(443) 682-7126  
abbym@baltimoresquashwise.org

**JL** Donated in memory of Jack Laporte to the Jack Laporte SquashWise Rally

**JF** Donated in memory of Jervis Finney

**OS** Donated in honor of Omar Sobhy

SQUASHWISE

10<sup>TH</sup>  
ANNIVERSARY



**SQUASHWISE**  
**10**  
**YEARS**  
2008-2018

BALTIMORE SQUASHWISE INC  
3600 CLIPPER MILL RD STE 103  
BALTIMORE, MD 21211-1957

Nonprofit  
Presort Standard  
U.S. Postage  
**PAID**  
Permit No. 58  
Hagerstown MD

